

Intermountain Specialized Abuse Treatment Center

3809 South West Temple, Suite 1-B
P.O. Box 65709
Salt Lake City, UT 84165
(801)268-4454

1868 North 1120 West
Provo, UT 84604
(801)373-0210

189 South State Street, Suite 160
Clearfield, UT 84015
(801)773-2044

520 South Main, Suite C
Cedar City, UT 84720
(435)586-5966

321 North Mall Drive, Suite A101
St. George, UT 84790
(435)628-8075

23 South Carbon Avenue, #10
Price, UT 84501
(435)637-4852

*“Mankind owes to the
child the best it has to
give.”*

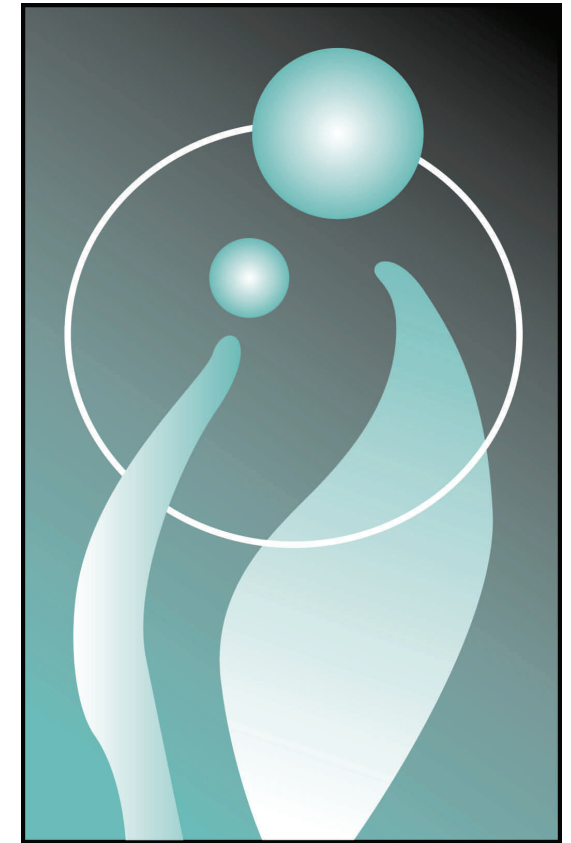
*United Nations Convention on
the Rights of the Child
(1989)*

ISAT MISSION STATEMENT

Intermountain Specialized Abuse Treatment Center is a private, nonprofit agency with a mission to provide specialized services to individuals and families affected by abuse, in order to help in the healing process and prevent future victimization.

Funded in part by the Utah State Department of Human Services, Utah State Department of Corrections, U.S. Probation, and the United Way (in select offices).

www.ISATcenter.org



I•S•A•T CENTER

Intermountain Specialized Abuse Treatment Center

Child/Victim Phase Program

Intermountain Specialized Abuse Treatment Center
Child/Victim Phase Program

PROGRAM DESCRIPTION

ISAT offers a complete treatment program specialized for the child and adolescent victims of sexual abuse. Therapeutic intervention is a necessary process to successfully overcome the emotional trauma brought on by sexual abuse.

Too often, abuse affects more than just the victims. That is why the Child/Victim Phase Program is designed to involve not only the victim but various family members and individuals affected by the abuse of the child or adolescent.

The success of the program is based on the involvement of the entire family. Throughout treatment, children and families are treated with dignity, respect and patience as they are assisted and directed in their healing process.

Program Components

- Individual Therapy
- Group Therapy
- Family Therapy



The program structure is comprised of 6 phases with goals and objectives in every phase. Individualized goal areas are also addressed.

The phases include the following:

- Therapeutic Alliance/Trauma Assessment
- Victim and Perpetrator Identification
- Creation of Positive Self-Image
- Breaking the Sexual Abuse Cycle
- Becoming a Survivor

Basic Program Costs

Insurance

If your insurance provides coverage for ISAT therapy, it will help pay a portion of the rate. The remaining balance is based on a sliding fee scale.

Self Pay

The Self Pay plan is based entirely on a sliding fee scale of each client's income.

Contract Funds

Some contract funds are available. Please contact your nearest ISAT office for more information.



For more information about ISAT and other programs available, visit our website at www.ISATcenter.org.

I•S•A•T
CENTER