

Intermountain Specialized Abuse Treatment Center

1555 West 2200 South, Suite A
Salt Lake City, UT 84119
(801)886-8900

1868 North 1120 West
Provo, UT 84604
(801)373-0210

189 South State Street, Suite 160
Clearfield, UT 84015
(801)773-2044

520 South Main, Suite C
Cedar City, UT 84720
(435)586-5966

321 North Mall Drive, Suite VW-104
St. George, UT 84790
(435)628-8075

23 South Carbon Avenue, #10
Price, UT 84501
(435)637-4852

*“Mankind owes to the
child the best it has to
give.”*

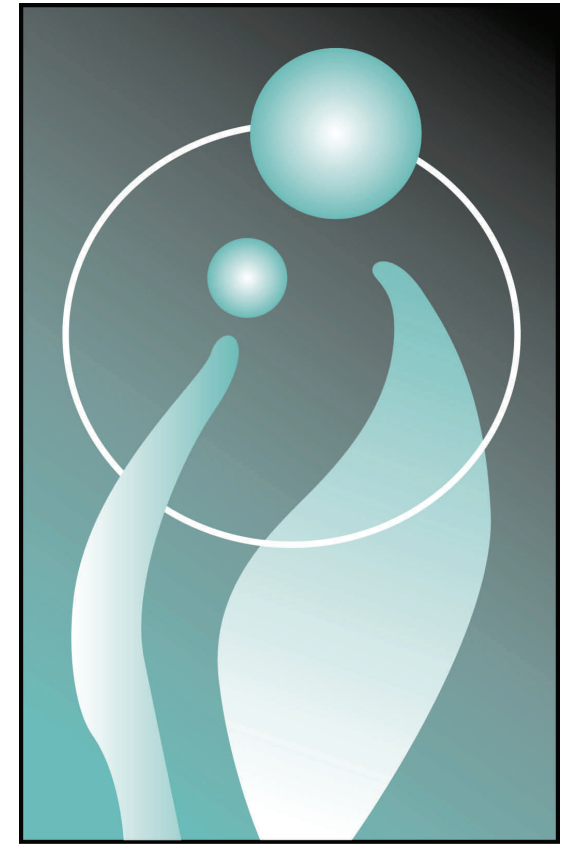
*United Nations Convention on
the Rights of the Child
(1989)*

ISAT MISSION STATEMENT

Intermountain Specialized Abuse Treatment Center is a private, nonprofit agency with a mission to provide specialized services to individuals and families affected by abuse, in order to help in the healing process and prevent future victimization.

Funded in part by the Utah State Department of Human Services, Utah State Department of Corrections, U.S. Probation, and the United Way (in select offices).

www.ISATcenter.org



**I•S•A•T
CENTER**

Intermountain Specialized
Abuse Treatment Center

Child/Victim Phase Program

Intermountain Specialized Abuse Treatment Center
Child/Victim Phase Program

PROGRAM DESCRIPTION

ISAT offers a complete treatment program specialized for the child and adolescent victims of sexual abuse. Therapeutic intervention is a necessary process to successfully overcome the emotional trauma brought on by sexual abuse.

Too often, abuse affects more than just the victims. That is why the Child/Victim Phase Program is designed to involve not only the victim but various family members and individuals affected by the abuse of the child or adolescent.

The success of the program is based on the involvement of the entire family. Throughout treatment, children and families are treated with dignity, respect and patience as they are assisted and directed in their healing process.

Program Components

- Individual Therapy
- Group Therapy
- Family Therapy



The program structure is comprised of 6 phases with goals and objectives in every phase. Individualized goal areas are also addressed.

The phases include the following:

- Therapeutic Alliance/Trauma Assessment
- Victim and Perpetrator Identification
- Creation of Positive Self-Image
- Breaking the Sexual Abuse Cycle
- Becoming a Survivor

Basic Program Costs

Insurance

If your insurance provides coverage for ISAT therapy, it will help pay a portion of the rate. The remaining balance is based on a sliding fee scale.

Self Pay

The Self Pay plan is based entirely on a sliding fee scale of each client's income.

Contract Funds

Some contract funds are available. Please contact your nearest ISAT office for more information.



For more information about ISAT and other programs available, visit our website at www.ISATcenter.org.

I•S•A•T
CENTER

Intermountain Specialized Abuse Treatment Center

1555 West 22200 South, Suite A
West Valley City, UT 84119
(801)886-8900

1868 North 1120 West
Provo, UT 84604
(801)373-0210

189 South State Street, Suite 160
Clearfield, UT 84015
(801)773-2044

520 South Main, Suite C
Cedar City, UT 84720
(435)586-5966

321 North Mall Drive, Suite VW-104
St. George, UT 84790
(435)628-8075

23 South Carbon Avenue, #10
Price, UT 84501
(435)637-4852

*“Destiny is not a matter
of chance, it is a matter of
choice; it is not a thing to
be waited for, it is a thing
to be achieved.”*

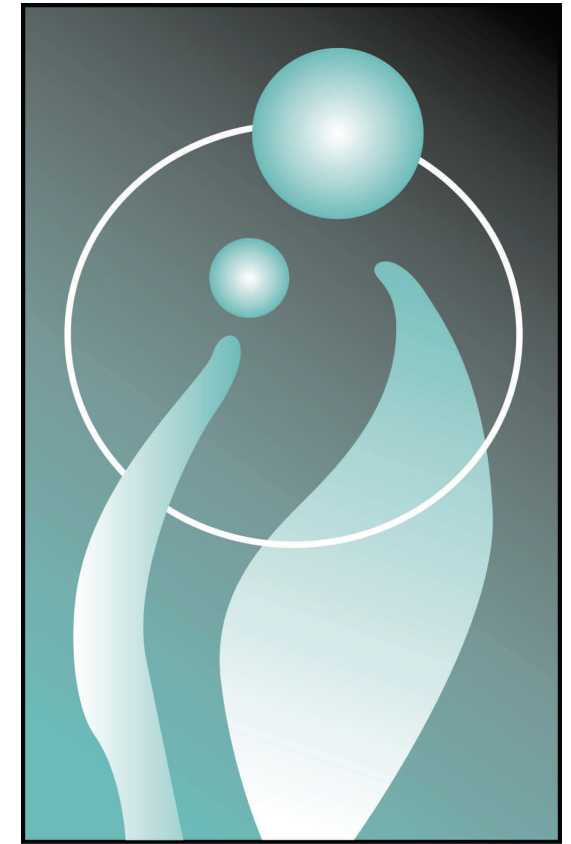
William Jennings Bryan

ISAT MISSION STATEMENT

Intermountain Specialized Abuse Treatment Center is a private, nonprofit agency with a mission to provide specialized services to individuals and families affected by abuse, in order to help in the healing process and prevent future victimization.

Funded in part by the Utah State Department of Human Services, Utah State Department of Corrections, U.S. Probation, and the United Way (in select offices).

www.ISATcenter.org



**I•S•A•T
CENTER**

Intermountain Specialized
Abuse Treatment Center

Adult Sex Offender Program

Intermountain Specialized Abuse Treatment Center
Adult Sex Offender Program

PROGRAM DESCRIPTION

The Adult Sex Offender Program provides complete treatment for adult sex offenders who are in need of therapeutic intervention. The program is designed to last approximately 18-24 months.

This particular ISAT program is specially designed for the offender who is in need of outpatient treatment in the community. The treatment involves family members, significant others, and others affected by the actions of the sexual offender.

ISAT has been providing offender counseling since 1983. Our therapists are caring, certified counselors specializing in treating adult sex offenders. A complete list of our services can be found at www.ISATcenter.org.

Program Components

- Weekly Individual Therapy
- Weekly Group Therapy
- Family /Couples (3 per level)
- Education Classes
- Psycho-Sexual Evaluation
- Polygraph Examinations (2)
- Progress Plethysmograph (Level 3)
- Sexual Reconditioning (if necessary)
- 20 hour Community Service Project
- Transition (3 months)
- After-Care Plan



The program structure is comprised of 4 levels followed by a transition period. A review is scheduled following the completion of each level prior to moving into the next level. This review is necessary to determine if the offender has developed an understanding of the goals and objectives of each level.

Basic Program Costs

Insurance

If your insurance provides coverage for ISAT therapy, it will help pay a portion of the rate. The remaining balance is based on a sliding fee scale.

Self Pay

The Self Pay plan is based entirely on a sliding fee scale of each client's income.



I•S•A•T
CENTER

For more information about ISAT and other programs available, visit our website at www.ISATcenter.org.

Intermountain Specialized Abuse Treatment Center

1555 West 2200 South, Suite A
West Valley City, UT 84119
(801)886-8900

1868 North 1120 West
Provo, UT 84604
(801)373-0210

189 South State Street, Suite 160
Clearfield, UT 84015
(801)773-2044

520 South Main, Suite C
Cedar City, UT 84720
(435)586-5966

321 North Mall Drive, Suite VW-104
St. George, UT 84790
(435)628-8075

23 South Carbon Avenue, #10
Price, UT 84501
(435)637-4852

*“Although the world is
full of suffering, it is also
full of the overcoming of
it.”*

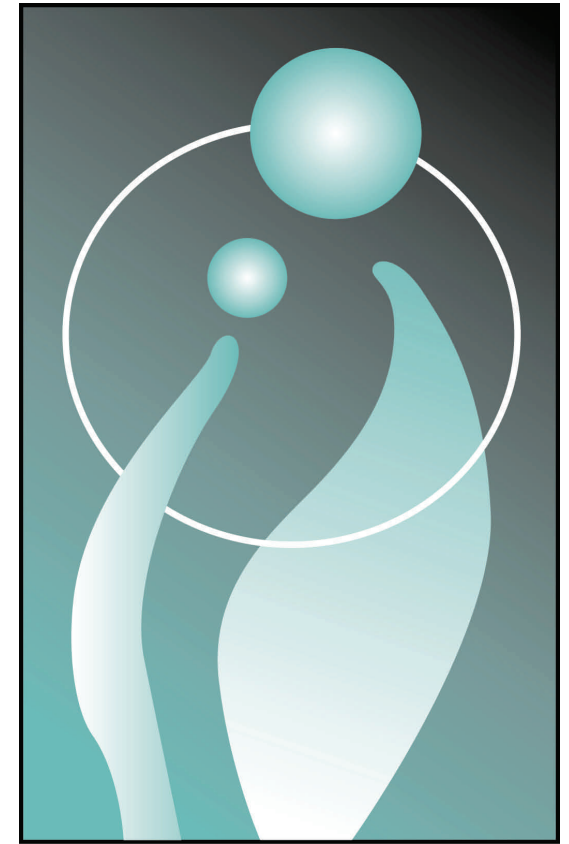
Helen Keller

ISAT MISSION STATEMENT

Intermountain Specialized Abuse Treatment Center is a private, nonprofit agency with a mission to provide specialized services to individuals and families affected by abuse, in order to help in the healing process and prevent future victimization.

Funded in part by the Utah State Department of Human Services, Utah State Department of Corrections, U.S. Probation, and the United Way (in select offices).

www.ISATcenter.org



I•S•A•T CENTER

Intermountain Specialized Abuse Treatment Center

Adults Molested As Children Program

Intermountain Specialized Abuse Treatment Center

Adults Molested As Children Program

PROGRAM DESCRIPTION

The Adults Molested As Children (AMAC) Program is a complete treatment program providing therapeutic intervention for adults.

Many adults suffer greatly due to unresolved sexual abuse sustained during their childhood or adolescent years. Our unique program is designed to provide a safe environment that promotes the healing process towards overcoming this obstacle and being a healthy survivor.

The Adults Molested As Children Program is designed to involve others that may be affected. When seen as appropriate by the therapist and client, family members and significant others may be included in the program to support and encourage their loved ones through this healing process.

Program Components

- Weekly Individual Therapy
- Weekly Group Therapy
- Family /Couples
(As deemed appropriate)
- Psychological Testing
(As deemed appropriate)
- Transition
- After-Care Plan



The AMAC program is comprised of a focused treatment plan, consisting of goals and rationale, measurement and evaluation of each goal. The program also consists of assignments to be completed by the client.

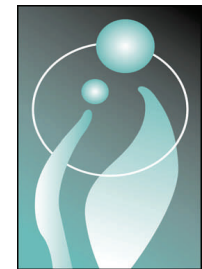
Basic Program Costs

Insurance

If your insurance provides coverage for ISAT therapy, it will help pay a portion of the rate. The remaining balance is based on a sliding fee scale.

Self Pay

The Self Pay plan is based entirely on a sliding fee scale of each client's income.



I•S•A•T
CENTER

Intermountain Specialized Abuse Treatment Center

1555 West 2200 South, Suite A
West Valley City, UT 84119
(801)886-8900

1868 North 1120 West
Provo, UT 84604
(801)373-0210

189 South State Street, Suite 160
Clearfield, UT 84015
(801)773-2044

520 South Main, Suite C
Cedar City, UT 84720
(435)586-5966

321 North Mall Drive, Suite VW-104
St. George, UT 84790
(435)628-8075

23 South Carbon Avenue, #10
Price, UT 84501
(435)637-4852

*“Although the world is
full of suffering, it is also
full of the overcoming of
it.”*

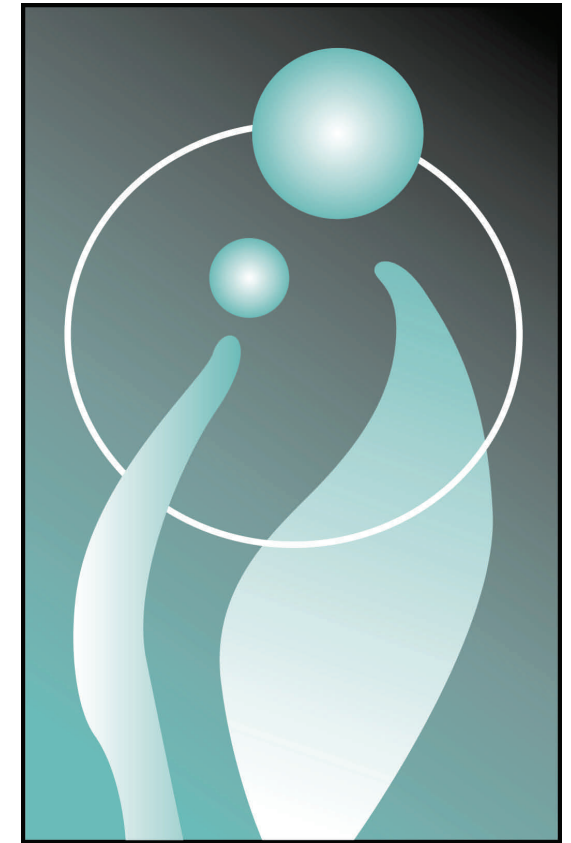
Helen Keller

ISAT MISSION STATEMENT

Intermountain Specialized Abuse Treatment Center is a private, nonprofit agency with a mission to provide specialized services to individuals and families affected by abuse, in order to help in the healing process and prevent future victimization.

Funded in part by the Utah State Department of Human Services, Utah State Department of Corrections, U.S. Probation, and the United Way (in select offices).

www.ISATcenter.org



I•S•A•T CENTER

Intermountain Specialized Abuse Treatment Center

Special Needs Adult Offender Program

Intermountain Specialized Abuse Treatment Center

Special Needs Adult Sex Offender Program

PROGRAM DESCRIPTION

This is a 12 month comprehensive program designed for Adult Sex Offenders who have special needs due to cognitive, language, intellectual or other factors. Extra effort is taken by certified ISAT counselors to ensure the therapy is effective to these individuals.

The patient's family members, significant others, and others affected by the abusive behavior will be involved in the treatment to make the healing process as complete as possible.

ISAT has been providing counseling since 1983. Our therapists are caring, certified counselors specializing in treating sex offenders. A complete list of our services can be found at www.ISATcenter.org.

Program Components

- Weekly Individual Therapy
- Weekly Group Therapy
- Family /Couples (3 per level)
- Education Classes (6 minimum)
- Psycho-Sexual Evaluation
- Polygraph Examinations (2)
- Progress Plethysmograph (Level 3)
- Sexual Reconditioning (if necessary)
- 20 hour Community Service Project
- Transition
- After-Care Plan



The program structure is comprised of 4 goal oriented treatment levels. Each level is followed by a transition period. A review is scheduled following the completion of each level prior to advancement to the next level. The reviews are necessary to determine whether the patient has achieved the goals of each level.

Basic Program Costs

Insurance

If your insurance provides coverage for ISAT therapy, it will help pay a portion of the rate. The remaining balance is based on a sliding fee scale.

Self Pay

The Self Pay plan is based entirely on a sliding fee scale of each client's income.



For more information about ISAT and other programs available, visit our website at www.ISATcenter.org.

I•S•A•T
CENTER

Intermountain Specialized Abuse Treatment Center

1555 West 2200 South, Suite A
Salt Lake City, UT 84119
(801)886-8900

1868 North 1120 West
Provo, UT 84604
(801)373-0210

189 South State Street, Suite 160
Clearfield, UT 84015
(801)773-2044

520 South Main, Suite C
Cedar City, UT 84720
(435)586-5966

321 North Mall Drive, Suite VW-104
St. George, UT 84790
(435)628-8075

23 South Carbon Avenue, #10
Price, UT 84501
(435)637-4852

*“Destiny is not a matter
of chance, it is a matter of
choice; it is not a thing to
be waited for, it is a thing
to be achieved.”*

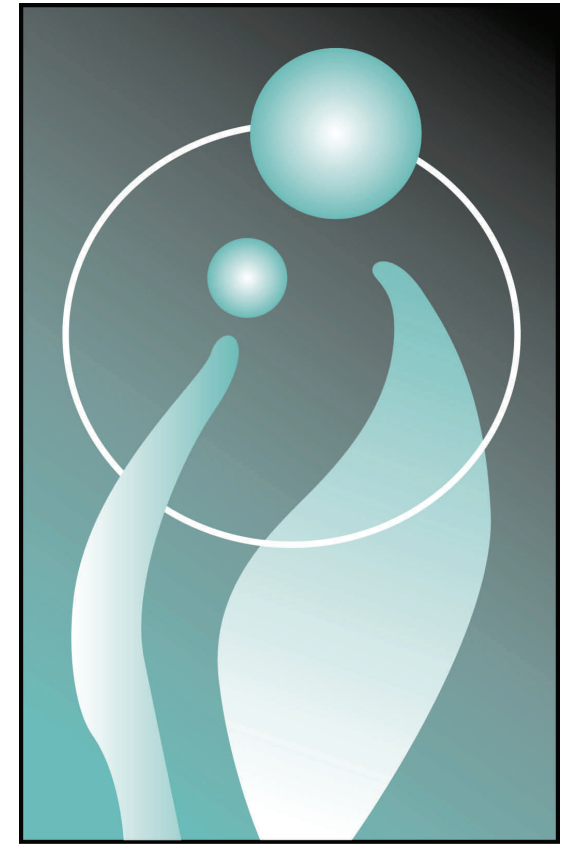
William Jennings Bryan

ISAT MISSION STATEMENT

Intermountain Specialized Abuse Treatment Center is a private, nonprofit agency with a mission to provide specialized services to individuals and families affected by abuse, in order to help in the healing process and prevent future victimization.

Funded in part by the Utah State Department of Human Services, Utah State Department of Corrections, U.S. Probation, and the United Way (in select offices).

www.ISATcenter.org



I•S•A•T CENTER

Intermountain Specialized
Abuse Treatment Center

Intensive Adult Sex Offender Program

Intermountain Specialized Abuse Treatment Center

Intensive Adult Sex Offender Program

PROGRAM DESCRIPTION

The Intensive Adult Sex Offender Program provides complete treatment for adult sex offenders who are in need of therapeutic intervention. The program is designed to last approximately 18-24 months.

This particular ISAT program is specially designed for the offender who would normally be placed in a halfway house or incarcerated as a result of their sexual crime. The ISAT program is designed to involve family members, significant others, and others affected by the actions of the sexual offender.

ISAT has been providing offender counseling since 1983. Our therapists are caring, certified counselors specializing in treating adult sex offenders. A complete list of our services can be found at www.ISATcenter.org.

Program Components

- Weekly Individual Therapy
- Weekly Group Therapy
- Family /Couples (3 per level)
- Education Classes
- Psycho-Sexual Evaluation
- Polygraph Examinations (2)
- Progress Plethysmograph (Level 3)
- Sexual Reconditioning (if necessary)
- 20 hour Community Service Project
- Transition (3 months)
- After-Care Plan
- 16 hours on-site per week, this is usually accomplished in 4-hour blocks on four days during the week. This will include: Individualized study time, Individual, Group (2), Peer Group, and education classes. A time clock will document time requirements.



The program structure is comprised of 4 levels followed by a transition period. A review is scheduled following the completion of each level prior to moving into the next level. This review is necessary to determine if the offender has developed an understanding of the goals and objectives of each level.

Basic Program Costs

Insurance

If your insurance provides coverage for ISAT therapy, it will help pay a portion of the rate. The remaining balance is based on a sliding fee scale.

Self Pay

The Self Pay plan is based entirely on a sliding fee scale of each client's income.



For more information about ISAT and other programs available, visit our website at www.ISATcenter.org.

I•S•A•T
CENTER