

Intermountain Specialized Abuse Treatment Center

1555 West 2200 South, Suite A
West Valley City, UT 84119
(801)886-8900

1868 North 1120 West
Provo, UT 84604
(801)373-0210

189 South State Street, Suite 160
Clearfield, UT 84015
(801)773-2044

520 South Main, Suite C
Cedar City, UT 84720
(435)586-5966

321 North Mall Drive, Suite VW-104
St. George, UT 84790
(435)628-8075

23 South Carbon Avenue, #10
Price, UT 84501
(435)637-4852

*“Courage is the greatest
of all the virtues.
Because if you haven’t
courage, you may not have
the opportunity to use any
of the others.”*

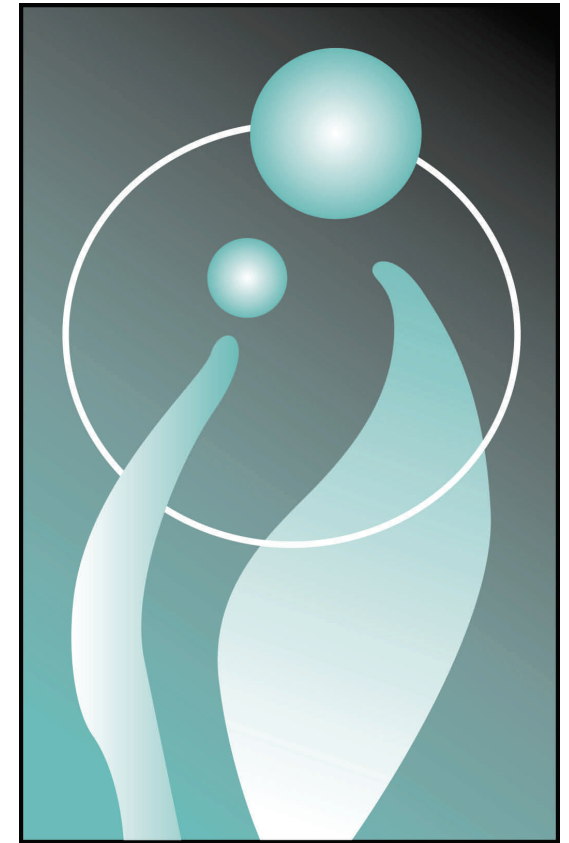
Samuel Johnson

ISAT MISSION STATEMENT

Intermountain Specialized Abuse Treatment Center is a private, nonprofit agency with a mission to provide specialized services to individuals and families affected by abuse, in order to help in the healing process and prevent future victimization.

Funded in part by the Utah State Department of Human Services, Utah State Department of Corrections, U.S. Probation, and the United Way (in select offices).

www.ISATcenter.org



I•S•A•T CENTER

Intermountain Specialized
Abuse Treatment Center

Domestic Violence Victim Program

Intermountain Specialized Abuse Treatment Center

Domestic Violence Victim Program

PROGRAM DESCRIPTION

The Domestic Violence Victim Program provides complete treatment for domestic violence victims who are in need of therapeutic intervention. The program is designed to last approximately 6 months.

ISAT therapists work with each client to define the nature of violent relationships and explore options and ways to be safe from further abuse.

ISAT has been providing therapeutic intervention since 1983. Our therapists are caring, certified counselors specializing in treating victims of domestic abuse. A complete list of our services can be found at www.ISATcenter.org.

Program Components

- Individual Therapy
- Group Therapy
- Family /Couples
(As deemed appropriate)



The ISAT program is comprised of Individual and Group therapeutic intervention. The treatment plan is centered around making goals, defining rationale, and the measurement and evaluation of each goal. It consists of assignments and understanding the expectations of therapy.

Basic Program Costs

Insurance

If your insurance provides coverage for ISAT therapy, it will help pay a portion of the rate. The remaining balance is based on a sliding fee scale.

Self Pay

The Self Pay plan is based entirely on a sliding fee scale of each client's income.

Contract Funds

Some contract funds are available. Please contact your nearest ISAT office for more information.



I•S•A•T
CENTER

For more information about ISAT and other programs available, visit our website at www.ISATcenter.org.

Intermountain Specialized Abuse Treatment Center

1555 West 2200 South, Suite A
West Valley City, UT 84119
(801)886-8900

1868 North 1120 West
Provo, UT 84604
(801)373-0210

189 South State Street, Suite 160
Clearfield, UT 84015
(801)773-2044

520 South Main, Suite C
Cedar City, UT 84720
(435)586-5966

321 North Mall Drive, Suite VW-104
St. George, UT 84790
(435)628-8075

23 South Carbon Avenue, #10
Price, UT 84501
(435)637-4852

*“Not everything that is
faced can be changed, but
nothing can be changed
until it is faced.”*

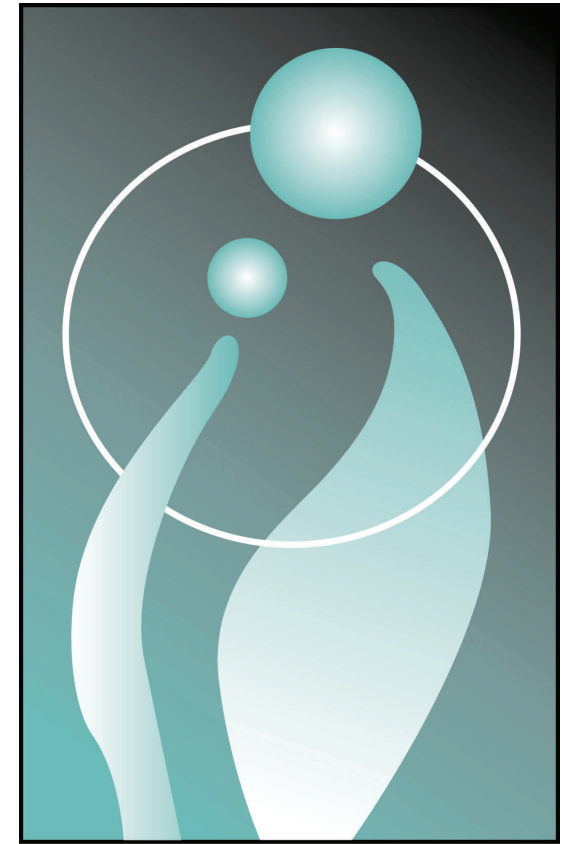
James A. Baldwin

ISAT MISSION STATEMENT

Intermountain Specialized Abuse Treatment Center is a private, nonprofit agency with a mission to provide specialized services to individuals and families affected by abuse, in order to help in the healing process and prevent future victimization.

Funded in part by the Utah State Department of Human Services, Utah State Department of Corrections, U.S. Probation, and the United Way (in select offices).

www.ISATcenter.org



I•S•A•T CENTER

Intermountain Specialized
Abuse Treatment Center

Domestic Violence Perpetrator Program

Intermountain Specialized Abuse Treatment Center

Domestic Violence Perpetrator Program

PROGRAM DESCRIPTION

The Domestic Violence Perpetrator Program provides complete treatment for domestic violence offenders who are in need of therapeutic intervention. The program is designed to last approximately 6-9 months.

This program is designed to involve the offenders, spouse/partner, various family members and children when deemed appropriate. It is geared specifically for individuals who have participated in acts of domestic violence toward their spouse, significant other or children.

ISAT has been providing therapeutic intervention since 1983. Our therapists are caring, certified counselors specializing in treating domestic violence offenders. A complete list of our services can be found at www.ISATcenter.org.

Program Components

- Individual Therapy as needed
- Group Therapy
- Family /Couples (As deemed appropriate)
- Intake Assessment
- Transition Plan



The ISAT program is comprised of Individual and Group therapeutic intervention. The treatment plan is centered around making goals, defining rationale, and the measurement and evaluation of each goal. It consists of assignments and understanding the expectations of therapy.

Basic Program Costs

Insurance

If your insurance provides coverage for ISAT therapy, it will help pay a portion of the rate. The remaining balance is based on a sliding fee scale.

Self Pay

The Self Pay plan is based entirely on a sliding fee scale of each client's income.

Contract Funds

Some contract funds are available. Please contact your nearest ISAT office for more information.



For more information about ISAT and other programs available, visit our website at www.ISATcenter.org.

I•S•A•T
CENTER

Intermountain Specialized Abuse Treatment Center

1555 West 2200 South, Suite A
West Valley City, UT 84119
(801)886-8900

1868 North 1120 West
Provo, UT 84604
(801)373-0210

189 South State Street, Suite 160
Clearfield, UT 84015
(801)773-2044

520 South Main, Suite C
Cedar City, UT 84720
(435)586-5966

321 North Mall Drive, Suite VW-104
St. George, UT 84790
(435)628-8075

23 South Carbon Avenue, #10
Price, UT 84501
(435)637-4852

*“Courage is the greatest
of all the virtues.
Because if you haven’t
courage, you may not have
the opportunity to use any
of the others.”*

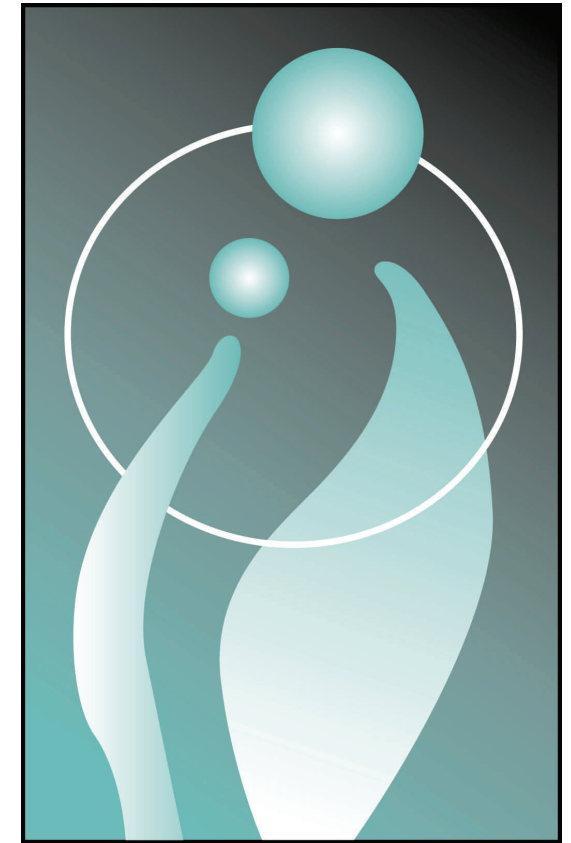
Samuel Johnson

ISAT MISSION STATEMENT

Intermountain Specialized Abuse Treatment Center is a private, nonprofit agency with a mission to provide specialized services to individuals and families affected by abuse, in order to help in the healing process and prevent future victimization.

Funded in part by the Utah State Department of Human Services, Utah State Department of Corrections, U.S. Probation, and the United Way (in select offices).

www.ISATcenter.org



I•S•A•T CENTER

Intermountain Specialized
Abuse Treatment Center

Domestic Violence Victim Program

Intermountain Specialized Abuse Treatment Center

Domestic Violence Victim Program

PROGRAM DESCRIPTION

The Domestic Violence Victim Program provides complete treatment for domestic violence victims who are in need of therapeutic intervention. The program is designed to last approximately 6 months.

ISAT therapists work with each client to define the nature of violent relationships and explore options and ways to be safe from further abuse.

ISAT has been providing therapeutic intervention since 1983. Our therapists are caring, certified counselors specializing in treating victims of domestic abuse. A complete list of our services can be found at www.ISATcenter.org.

Program Components

- Individual Therapy
- Group Therapy
- Family /Couples
(As deemed appropriate)



The ISAT program is comprised of Individual and Group therapeutic intervention. The treatment plan is centered around making goals, defining rationale, and the measurement and evaluation of each goal. It consists of assignments and understanding the expectations of therapy.

Basic Program Costs

Insurance

If your insurance provides coverage for ISAT therapy, it will help pay a portion of the rate. The remaining balance is based on a sliding fee scale.

Self Pay

The Self Pay plan is based entirely on a sliding fee scale of each client's income.

Contract Funds

Some contract funds are available. Please contact your nearest ISAT office for more information.



I•S•A•T
CENTER

For more information about ISAT and other programs available, visit our website at www.ISATcenter.org.